



WASTE MANAGEMENT STRATEGY 2022-2025 FOR STATIONS AND OFFICE BUILDINGS

Original Author / Role	Sheona McIntyre, Environment Officer
Date of Risk Assessment (if applicable)	N/A
Date of Equality Impact Assessment	Considered and agreed there are no adverse impacts: EIA not required
Date of Impact Assessment (commenced)	N/A
Date of Impact Assessment (concluded)	N/A
Quality Control (name)	Peter Robertson, Environment and Carbon Manager
Authorised (name and date)	Environment and Carbon Management Board – October 2022
Date for Next Review	March 2025

Safety. Teamwork. Respect. Innovation.

VERSION HISTORY

Version	Change	Who	When
1.0	First version issued	Sheona McIntyre, Environment Officer	08/11/2022



SCOTTISH
FIRE AND RESCUE SERVICE

Working together for a safer Scotland

FINANCE AND CONTRACTUAL SERVICES

WASTE MANAGEMENT STRATEGY 2022-2025

1. [INTRODUCTION](#)

2. [CURRENT WASTE PERFORMANCE](#)
 - 2.1 [Waste Streams](#)
 - 2.2 [Challenges with Waste Data](#)
 - 2.3 [Current Waste Targets](#)

3. [WASTE MANAGEMENT HIERARCHY](#)

4. [WASTE AND CARBON](#)

5. [MAIN OBJECTIVES AND STRATEGIC THEMES](#)

6. [ACTION PLAN](#)

7. [ASSOCIATED DOCUMENTS / REFERENCES](#)

1. INTRODUCTION

The Scottish Fire and Rescue Service (SFRS) has a complex estate, with varying waste requirements across fire stations, offices and workshops. Each year, on average, there are over 31,000 scheduled waste collections across the Service, producing a total of 880 Tonnes of waste. In 2016, the Scottish Government published '*Making Things Last: A Circular Economy Strategy for Scotland*' which takes the ambitious waste reduction and recycling targets set out in 'Scotland's Zero Waste Plan' and places an emphasis on changing the way goods are produced and managed to have a reduced impact on finite resources and move away from a typical linear economy of "take-make-dispose".

SFRS are working toward the adoption of a circular economy and, in 2020, we published our [Environmental Policy](#), dedicated to using natural resources in an efficient manner and managing our waste in line with the [waste management hierarchy](#). The Service also recently published our [Long-Term Vision](#) where one of our main principles is to remain progressive and "*achieve greater organisational sustainability by reducing our carbon consumption and our environmental impact*". Therefore, we have produced this Waste Strategy as a fundamental element of implementing our Environmental Policy and ensuring we meet our commitments set out in our Long-Term Vision and Strategic Plans.

This Waste Strategy will set out how SFRS will work towards becoming Zero Waste, by focussing on waste prevention and reuse options by embedding a circular economy approach, as well as improving our recycling rates across the service. Zero Waste does not mean that no waste will be produced across the Service but refers to a new approach of avoiding wasting resources and making the most effective use of all materials. Our main aims of this Strategy are to reduce waste to landfill through recycling or energy recovery, and to reduce the volume of waste produced through possible waste prevention and reuse options. This Waste Strategy will explain our current waste performance, the progress we have made so far and our future ambitions to ensure we meet our objectives set out in our [Environmental Policy](#) and Strategic Plans.

2. CURRENT WASTE PERFORMANCE

In 2021-2022, SFRS produced 880 tonnes of waste across our estate; this is equivalent to the volume of waste produced by around 880 UK households. The appointment of Sodexo as our Soft FM Contractor in 2019 provided the Service with detailed baseline data on the volume and composition of waste produced across the estate. [Figure 1](#) shows our total waste production, including ad hoc and scheduled waste from April 2019 through to March 2022. During this period, there has been a 9% reduction in the total volume of waste produced, whilst the volume of materials being recycled remaining consistently at around 40%. The volume of hazardous waste produced across the estate is also shown in Figure 1, hazardous waste is mainly produced from workshops and is not routinely produced at other sites.

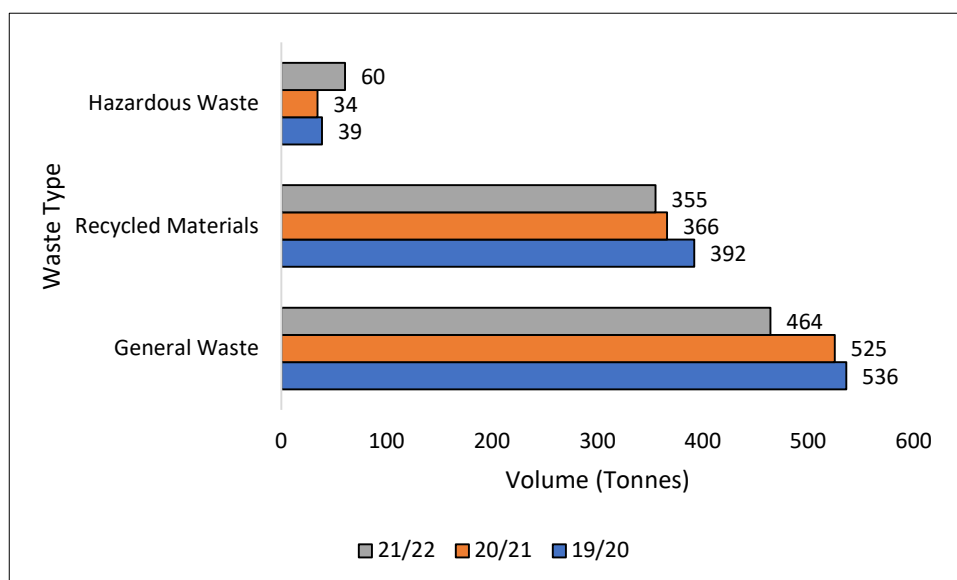


Figure 1: Total Waste Volumes 2019-2022

Scheduled waste is waste that is picked up on an agreed frequency from stations, workshops and office buildings; it accounted for 75% of our total waste production in 2021-2022. Scheduled waste remains consistent, whereas ad hoc waste can vary, depending on projects across the estate; scheduled waste is where we can monitor waste production best and make the most impactful changes. [Figure 2](#) shows the annual comparison of our scheduled waste uplifts between April 2019 and March 2022. In Figure 2, a reduction in all waste streams can be seen; this is due to a combination of the provision of actual waste data at more sites instead of average

data and remote working due to COVID. The volume of waste recycled from scheduled uplifts has remained consistent at 40%.

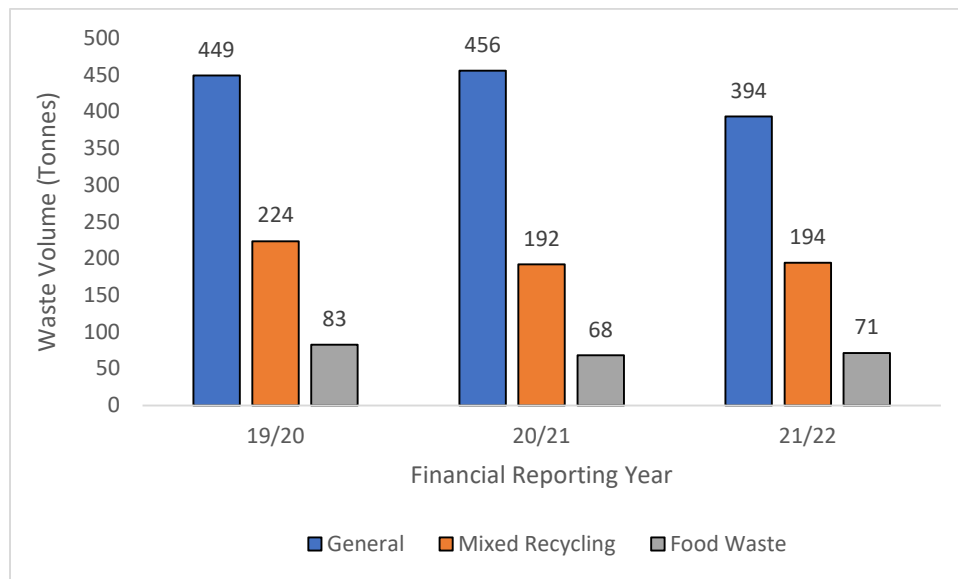


Figure 2: Volume of Waste from Scheduled Uplifts 2019-2022

2.1 Waste Streams

The waste streams produced across SFRS vary depending on the activity and use of individual buildings. Wholtime stations produce general waste, mixed recycling and food waste with occasional ad hoc waste jobs. General waste is classed as any materials that are non-hazardous and non-recyclable items, such as low-quality plastics, e.g. crisp packets and polystyrene. Mixed Recycling includes plastic bottles, cardboard, paper and cans; other recyclable waste streams include metal, electronic items and timbers. The remainder of our waste is classed as hazardous and are materials that are predominantly produced from our workshops, such as oily rags, oil filters, waste fuel, etc. The majority of all SFRS waste can be recycled or sent to refuse derived fuel (RDF) facilities, where it is used for energy generation. Only 12% of our waste is required to be sent to landfill and this is predominantly in remote rural areas where alternative disposal facilities are not available.

2.2 Challenges with Waste Data

Since 2019, the waste data provided to SFRS through the Soft FM contract has helped us to identify where improvements can be made and has provided greater transparency of the composition of waste produced across the estate. However, due to the nature of some remote fire stations and the limited waste contractors available, some waste figures are based on industry estimated data. This can have a significant impact when reporting on waste data, as some of the figures overestimate the volume of waste produced. Currently, this data is used but work is being carried out to move waste services to contractors that can provide actual data and considerations as to whether averages based upon SFRS waste data can replace the industry average data to provide greater accuracy.

2.3 Current Waste Targets

We currently have one waste management target for the SFRS estate, which is “*A 5% annual reduction in scheduled waste from Wholetime Fire Stations and corporate sites going to refuse derived fuel (RDF) or landfill*”. This target was created in 2020 and is specifically focussed on wholetime stations, as they have the most accurate data. The COVID-19 Pandemic has had an impact on the volume of waste produced across the Service, as more single use items were possibly used. However, this aside, we have still been able to record a 7.7% reduction in scheduled waste from Wholetime fire stations between 2020 and 2022. This target will remain in effect as we continue to encourage recycling and reducing waste across our estate.

3. WASTE MANAGEMENT HIERARCHY

We will continue to implement a Waste Management Hierarchy across the Service which will ensure that our waste management procedures have the best environmental outcome. Following the waste management hierarchy provides clear guidance for reducing the volume of waste being produced on site and increasing recycling rates in line with Scottish Government legislation and guidance.

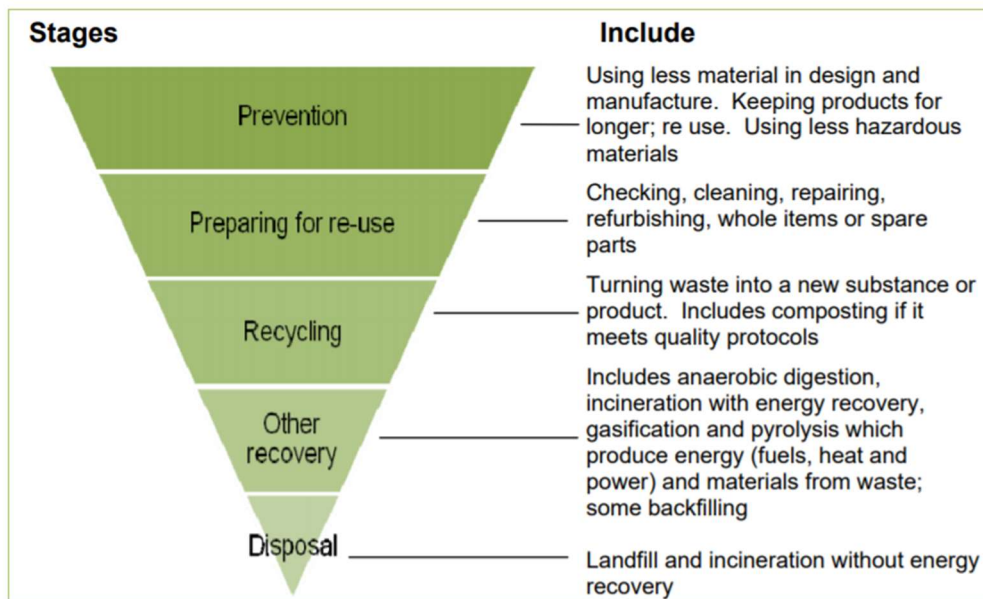


Figure 3: The Waste Management Hierarchy (Source: DEFRA)

[Figure 3](#) shows the basic principles of the Waste Management Hierarchy. We will continue to implement this hierarchy by:

- Identifying waste streams that could be prevented, e.g. packaging materials;
- Encouraging the re-use of materials, for example, if they can be used elsewhere in the Service;
- Promoting better recycling across the Service, making sure that all possible waste that can be recycled is disposed of as recycled materials;
- Ensuring any waste unable to be recycled can be recovered as energy, with landfill only being used if there is no waste to energy option available.

Through implementing the Waste Management Hierarchy, we will ensure that a circular economy is also embedded within our waste management procedures.

[Figure 4](#) provides details on how to extend the life of raw materials through extending the reuse phase, this strategy will provide details on how we plan to embed a more circular approach to managing our waste streams.

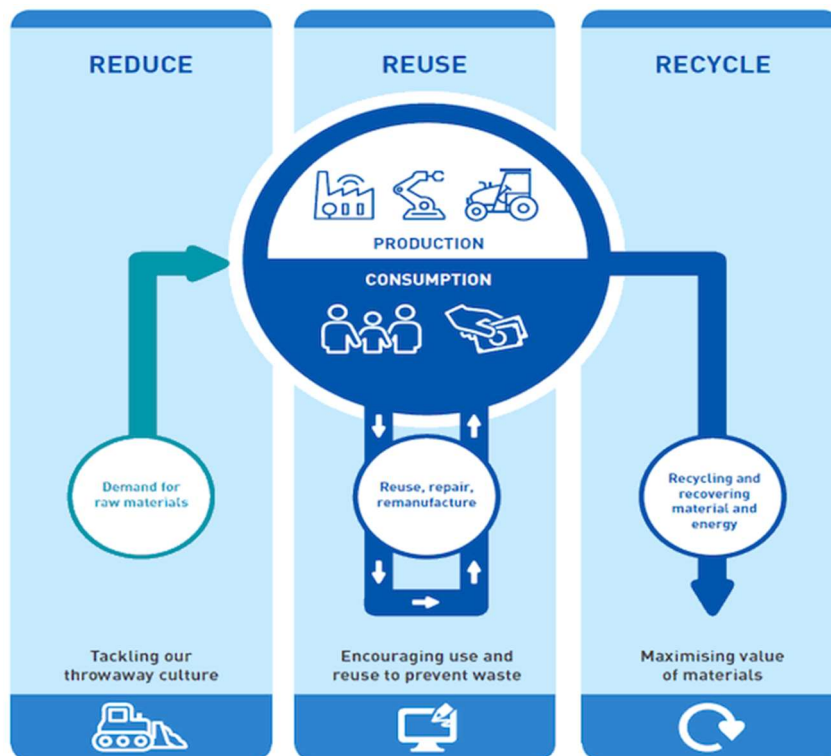


Figure 4: Circular Economy Approach to Production and Consumption
(Source: Zero Waste Scotland)

4. WASTE AND CARBON

In May 2019, the Scottish Government declared a climate emergency. Legislation was then passed in September 2019, committing Scotland to achieving net zero carbon emissions by 2045. In response, SFRS has developed its [Climate Change Response Plan](#), outlining how SFRS contributes to climate change and the measures as to how SFRS will also be able to achieve net zero carbon emissions by 2045.

Waste production across the SFRS estate contributes to less than 1% of our annual carbon emissions and, in 2020-2021, accounted for 80 tonnes of CO₂e. This is the equivalent to the annual carbon emissions produced by 8 people in the UK or travelling around 387,000 miles by car. This Strategy will consequently support our [Climate Change Response Plan 2045](#) and our overall goal of achieving net zero carbon emissions by 2045.

5. MAIN OBJECTIVES AND STRATEGIC THEMES

Our main aims of this Strategy are to work towards becoming Zero Waste, by focussing on waste prevention and reuse options by embedding a circular economy approach, as well as improving our recycling rates across the service.

Our Main Objectives of this Strategy are:

- A 5% annual reduction in scheduled waste from Wholetime fire stations and corporate sites going to refuse derived fuel (RDF) or landfill by 2025;
- A 100% utilisation of food waste bins across Wholetime fire stations by 2023-24;
- Increase recycling rate across the Service from 40% in 2020 to 45% by 2025;
- To embed environmental checklists, covering correct use of waste facilities, into regular station checks by 2023-24.

For SFRS to be able to meet our main objectives, there are four key strategic themes of the SFRS Waste Strategy:

- **Implementation of Policy**
 - We will publish and share the SFRS Waste Management Policy and Strategy with stations and conduct regular reviews;
 - We will implement any Scottish Government legislative changes, such as the Deposit Return Scheme and single use plastics ban.
- **Encourage and Support Behavioural Change**
 - We will update and create online Environmental Awareness Training for all staff on key environmental issues, including waste management;
 - The Environment and Carbon Management Team will conduct at least 5 waste audits a quarter, with Sodexo carrying out further audits;
 - We will engage with Environmental Champions to understand issues with recycling and any local improvements that can be made on individual stations;

- We will produce educational and awareness materials on waste management to encourage recycling and reuse;
 - We will support and create communication campaigns on waste management.
- **Efficient Waste Management Service**
 - Review the waste service uplift schedule to check if each site has the correct waste facilities and number of uplifts;
 - Review waste contractors used across the Service to see if there are any changes that could be made to improve the service, such as the provision of actual waste data;
 - We will investigate whether changes to waste contractors may help reduce the volume of waste being sent to landfill;
 - We will carry out regular analysis of waste data creating league tables for Wholetime stations;
 - We will also review waste data to check for any inaccuracies or errors that would affect our waste reporting.
- **Promote Circular Economy**
 - We will conduct a review of the raw materials used across the Service to understand if more sustainable options can be used to reduce waste;
 - We will establish a procedure for re-using furniture across the service instead of it being disposed of as waste;
 - Engage with the Procurement Department to ensure sustainable procurement is being carried out across the Service;
 - We will carry out a review of our waste streams with the highest carbon impact creating an action plan on how to reduce these waste streams.

6. ACTION PLAN

An Action Plan has been created, focussing on each of our strategic themes, that will help us to achieve our overall objectives of reducing waste to landfill and reducing the volume of waste produced through possible waste prevention and reuse options. Our action plan is available on request. However, the actions are summarised above. We will also provide annual updates on our progress against our action plan.

7. ASSOCIATED DOCUMENTS / REFERENCES

[Climate Change Response Plan 2045](#)

[Environmental Policy 2020-2025](#)

[Long-Term Vision](#)

[Scottish Government. Making Things Last: a circular economy strategy for Scotland, 2016](#)

[Scottish Government. Scotland's Zero Waste Plan, 2010](#)